


Minimal lattice model of lipid membranes with liquid-ordered domains

Tanmoy Sarkar  and Oded Farago 

Department of Biomedical Engineering, Ben Gurion University of the Negev, Be'er Sheva 84105, Israel

 (Received 14 March 2021; accepted 21 October 2021; published 19 November 2021)

Mixtures of lipids and cholesterol are commonly used as model systems for studying the formation of liquid-ordered (L_o) domains in heterogeneous biological membranes. The simplest model system exhibiting coexistence between L_o domains and a liquid-disordered (L_d) matrix is that of a binary mixture of saturated lipids such as DPPC and cholesterol (Chol). DPPC/Chol mixtures have been investigated for decades both experimentally, theoretically, and recently also by means of atomistic simulations. Here, we present a minimal lattice model that captures the correct behavior of this mixture across multiple scales. On the macroscopic scales, we present simulation results of mixtures of thousands of lipids and Chol molecules which show excellent agreement with the phase diagram of the system. The simulations are conducted on timescales of hundreds of microseconds and show the morphologies and dynamics of the domains. On the molecular scales, the simulations reveal local structures similar to those recently seen in atomistic simulations, including the formation of gel-like nanodomains (~ 1 – 10 nm) within larger Chol-rich L_o domains (~ 10 – 100 nm). The observed multiscale behavior is related to the tendency of Chol to induce ordering of acyl chains on the one hand, and disrupt their packing with each other, on the other hand.

DOI: [10.1103/PhysRevResearch.3.L042030](https://doi.org/10.1103/PhysRevResearch.3.L042030)

Introduction. The plasma cell membrane is characterized by a lateral heterogeneous distribution of its biomolecular components [1]. Specifically, it contains small (10–200 nm) domains, termed lipid rafts, enriched in saturated lipids (mainly sphingolipids), cholesterol (Chol), and often particular proteins [2,3]. While many aspects of this “raft hypothesis” (including even their very existence in cellular membranes) remain controversial [4], there is strong evidence that raft domains play a key role in cellular processes such as signal transduction [5], cell adhesion [6,7], and membrane trafficking [8,9]. Rafts are “liquid-ordered” (L_o) domains where the lipid hydrocarbon chains are more ordered and more tightly packed than the surrounding nonraft “liquid-disordered” (L_d) phase of the bilayer [10,11]. The L_o domains have features resembling both the L_d phase (lateral lipid mobility [12]) and the “gel” phase where the lipid acyl chains are fully extended, tightly packed, and spatially ordered [13].

Biophysical studies of L_o domains are rarely performed on biological membranes that contain hundreds of types of lipids. Instead, simple model systems have been investigated, typically ternary mixtures of saturated and unsaturated lipids and cholesterol [14–24]. An even simpler system exhibiting domain formation is a binary mixture of Chol and saturated lipids such as DPPC. Specifically, L_o domains appear in coexistence with an L_d phase at intermediate Chol

concentrations and temperatures slightly above the DPPC liquid-gel transition temperature T_m [25,26] (see the phase diagram in Fig. 1). The domains appear to be both small and transient, not macroscopically phase separated from the L_d matrix [27]. Recently, the homogeneity of the L_o phase itself has been called into question [28]. Neutron scattering data at high Chol concentration have been interpreted as if the L_o phase contains highly ordered nanodomains residing in a somewhat less ordered environment [29]. A recent atomistic simulation study of DPPC/Chol mixtures has provided further support to this picture [30]. The simulations reveal the existence of Chol-free hexagonally packed small clusters of acyl chains within liquid-ordered domains that are rich in Chol, especially along the domain boundaries. These new findings revoke a renewed discussion on the phase behavior of DPPC/Chol mixtures.

In this Letter, we present a lattice model addressing the multiscale behavior of DPPC/Chol mixtures. It reproduces the local inhomogeneous structure of the domains on the one hand, and the phase diagram of the whole system on the other hand. The model features a considerably smaller number of parameters compared to classical lattice models of DPPC/Chol mixtures such as the ten-state Potts-like Pink model [31] and the model of Ipsen *et al.* [25]. It is also different than the Almeida lattice model [32] that uses a top-down thermodynamic approach that assigns free energies to each state (gel/liquid-disordered/liquid-ordered). A unique feature of the model presented herein is the presence of empty sites that represent small area voids. This facilitates investigations of the diffusive dynamics of the lipids in the different phases. The minimal nature of the model and its ability to provide multiscale information on both structural and dynamic properties of the system helps us to unravel the main thermodynamic and molecular forces underlying the

*ofarago@bgu.ac.il

Published by the American Physical Society under the terms of the [Creative Commons Attribution 4.0 International license](https://creativecommons.org/licenses/by/4.0/). Further distribution of this work must maintain attribution to the author(s) and the published article's title, journal citation, and DOI.

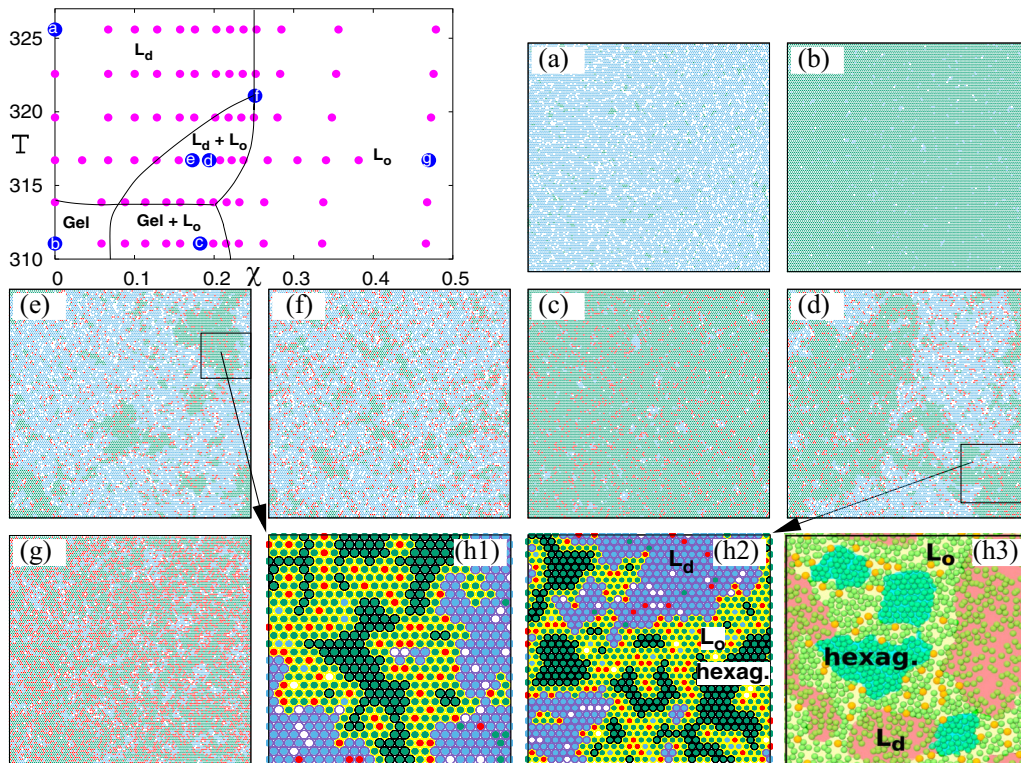


FIG. 1. Top left: The phase diagram of DPPC/Chol mixtures, with phase boundaries (solid black lines) taken from Ref. [26]. Magenta dots show locations of the simulated systems. The blue dots with white letters denote the locations in phase space of the systems from which snapshots (a)–(g) are taken. In the snapshots, ordered and disordered lipid chains, cholesterol, and empty sites (voids) are colored in green, blue, red, and white, respectively. (h1), (h2) Zoom-in views of certain regions in snapshots from the $L_d + L_o$ region [black boxes in (e) and (d)]. Here, the sites belonging to the gel, L_o , and L_d are marked with black, yellow, and purple borders, respectively. (h3) A snapshot taken from atomistic simulations presented in Ref. [30]. Here, DPPC chains and cholesterol are shown in green and orange, respectively, and the hexagonal (hexag.), L_o , and L_d regions are, respectively, shaded with blue, yellow, and red.

formation of liquid-ordered domains. Specifically, we identify the exclusion of Chol from both the gel and the L_d phases as the reason for its accumulation along the interfaces between them. The accumulated high concentration of Chol molecules triggers the ordering of the lipid chains in their vicinity.

Model and simulations. DPPC lipids are modeled as dimers of two chains, while the Chol molecules are represented by single chains. Each site of the lattice can be in one of four states ($s = 0, 1, 2, 3$): It can be occupied by a DPPC chain in either a disordered ($s = 1$) or an ordered ($s = 2$) state, a Chol molecule ($s = 3$), or be empty ($s = 0$) representing a small area void. The introduction of empty sites (i) allows the Monte Carlo (MC) simulations to mimic the diffusive dynamics of the lipids, and (ii) enables setting correctly the area per lipid in the different states (see details below), rather than making it a state-dependent adjustable parameter (as in Refs. [25,31]). This is also the reason for modeling lipids as dimers rather than monomers. The disordered state of the DPPC chain ($s = 1$) is entropically favored by a free energy $F_1 = -\Omega_1 k_B T$ (where k_B is the Boltzmann constant and T is the temperature) compared to the ordered state ($s = 2$), but two nearest-neighbor chains in the ordered state have an interaction free energy $F_{22} = -\epsilon_{22} < 0$ representing the favorable packing of chains in this state. The competition between these terms drives a first-order melting transition of the DPPC bilayer at $T_m = 314$ K [33]. Chol interaction free energy with a

nearest-neighbor ordered chain is equal to $F_{23} = -\epsilon_{23} < 0$. We set $\epsilon_{23} < \epsilon_{22}$, which means that Chol prefers locations close to the ordered chains, but with an interaction free energy that is weaker than their packing interactions with each other. The physical length of the lattice spacing l is determined by considering a pure DPPC system (without Chol). In the gel state, we expect the ordered lipid chains to cover almost the entire lattice with only a negligible fraction of empty lattice sites. Thus, the lattice spacing is set to $l = 5.5$ Å, which means that the area per lipid (which occupies two sites) is $a \simeq 52$ Å² [30], and the area per Chol is $a_C \simeq 26$ Å² [34]. In the L_d state, the area per DPPC molecule increases to roughly $a \simeq 60$ Å² [30]. This means that about 15% of the lattice sites in the L_d phase must be empty. In order to accomplish this, we introduce an elasticity-like quadratic term with a minimum at a ratio of $c_r = (85/2)/15 \simeq 2.83$ between the number of lipids with two disordered chains (N_{11}) and the number of voids (N_0). Taking all together, the energy assigned to each MC configuration is given by

$$\begin{aligned}
 E = & -\Omega_1 k_B T \sum_i \delta_{s_i,1} - \sum_{i,j} \epsilon_{22} \delta_{s_i,2} \delta_{s_j,2} \\
 & - \sum_{i,j} \epsilon_{23} [\delta_{s_i,2} \delta_{s_j,3} + \delta_{s_i,3} \delta_{s_j,2}] + e_m (N_{11} - c_r N_0)^2 / N_s,
 \end{aligned} \tag{1}$$

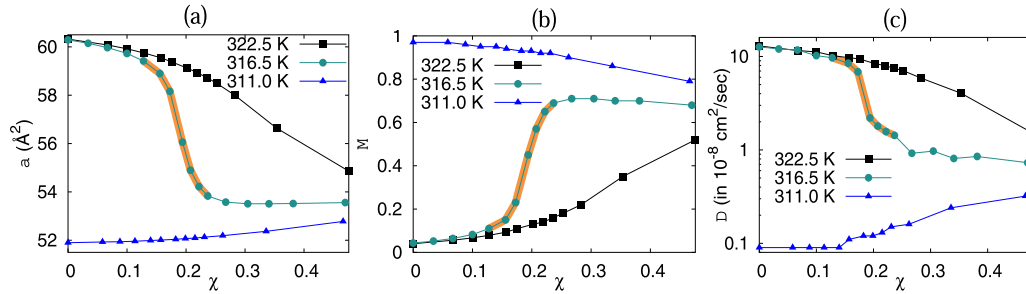


FIG. 2. (a) The area per lipid, (b) fraction of chains in the ordered state (the ratio between the number of ordered chains and the total number of lipid chains), and (c) average diffusion coefficient of the lipids, as a function of the cholesterol mole fraction. At $T = 316.5$ K, the system enters the $L_d + L_o$ two-phase region at intermediate cholesterol concentrations, which is indicated by the portion of the curves shaded with orange.

where the deltas are Kronecker deltas, and the summations are carried over all N_s lattice sites in the first term and over all nearest-neighbor pair sites in the second and third terms in Eq. (1). Defining an energy unit $\epsilon = 1$, we set the packing energies in Eq. (1) to $\epsilon_{22} = 1.3\epsilon$ and $\epsilon_{23} = 0.72\epsilon$. The entropy parameter in the first term in Eq. (1) is set to $\Omega_1 = 3.9$, and the elastic modulus in the fourth term is $e_m = 85\epsilon$. These values are in reasonable consistency with values of related parameters used in classical models that inspired our work [25,35–37].

The MC simulations are conducted on a triangular lattice of $N_s = 121 \times 140 = 16940$ sites (with periodic boundary conditions) that has an aspect ratio close to 1. They involve three types of move attempts: (i) displacements of randomly chosen Chol or a lipid chain (dimer rotation) to a nearest-neighbor vacant site, (ii) exchange of a lipid having two ordered chains with a pair of nearest-neighbor voids and vice versa ($22 \leftrightarrow 00$: density changing), and (iii) flipping the state (ordered/disordered) of a randomly chosen lipid chain ($1 \leftrightarrow 2$: state exchange). In a pure DPPC system, we start by dividing the system into two halves, one in the gel and one in the liquid-disordered phase. The system is equilibrated until one of these phases takes over the other. As expected, the melting transition is first order and takes place at $k_B T_m \simeq 0.90\epsilon$. Chol is added by taking an equilibrated pure system and replacing randomly chosen lipids with two Chol chains, after which the system is further simulated until it settles into the new equilibrium distribution.

Results. We simulated the system at different temperatures (T) and different molar fractions of Chol (χ). The phase diagram is shown in the upper left-hand corner of Fig. 1, where the magenta dots indicate the locations in phase space of the simulated systems, and the blue dots the locations of systems from which Figs. 1(a)–1(g) are taken. The phase boundaries (solid black lines) are taken from Ref. [26], and we find our observations to be consistent with them. At low concentrations of Chol, the system is in the gel phase for $T < T_m$ [Fig. 1(b)] and in the L_d phase for $T > T_m$ [Fig. 1(a)]. In the former the lattice is almost fully covered by ordered chains (depicted in green), while in the latter the lattice is mostly covered by disordered chains (blue) with a visible fraction of empty sites (white). At high Chol (red) concentrations ($\chi \gtrsim 0.25$), the system is found in a single L_o state, containing a relatively high fraction of ordered chains [Fig. 1(g)].

Figures 1(d)–1(f), which are from the $L_d + L_o$ coexistence region, clearly show the appearance of domains of ordered lipids within a sea of disordered chains. These domains are dynamic and have irregular morphologies, suggesting that the system is *not* macroscopically phase separated.

In order to quantify the properties of the different phases, we measured the area per lipid, $a = 52 \text{ \AA}^2 \times (\text{No. of lipid chains and voids}/\text{No. of lipid chains})$ [Fig. 2(a)], and the fraction of ordered chains M [Fig. 2(b)] at three different temperatures. For $T = 311 \text{ K} < T_m$ (blue triangles), we observe a gradual increase in a and a gradual decrease in M with χ . For temperature $T = 322.5 \text{ K}$ (black squares), which is substantially above T_m , we see the opposite trends, namely a decrease in a accompanied by an increase in M . These trends reflect the fact that the level of order and chain packing in the liquid-ordered state is intermediate between the gel and liquid-disordered states. For $T = 316.5 \text{ K} \gtrsim T_m$ (green circles), a sharp crossover from L_d (high a , low M) to L_o (low a , high M) is observed for $0.12 \lesssim \chi \lesssim 0.24$, which is exactly the location of the $L_d + L_o$ coexistence regime in phase space. Similar trends are also detected in Fig. 2(c) which shows the average diffusion coefficient D of the lipids. In full agreement with atomistic simulation results [30], we find the value of D in the liquid-disordered state to be two orders of magnitude larger than that of the gel where the mobility of the lipids is nearly nonexistent. In the liquid-ordered state, D is about an order of magnitude smaller (larger) than in the liquid-disordered (gel) state, implying that this is a relatively viscous liquid.

The values of D in Fig. 2(c) are quoted in physical time units that are related to the MC time by using the experimental value of $D = 11.2 \times 10^{-8} \text{ cm}^2/\text{s}$ at $T = 322.5 \text{ K}$ and $\chi = 0.1$ (L_d state) [30]. The simulations extend over ~ 5 ms, i.e., three to four orders longer than the atomistic simulations in Ref. [30]. The Supplemental Material movie [38] shows 100- μs dynamics (with a time difference of 4.6 μs between consecutive frames) of liquid-ordered domains in the $L_d + L_o$ coexistence regime. The characteristic lifetime of the domains in the movie is $\tau \lesssim 20 \mu\text{s}$. We performed simulations with different ratios of translation versus state-exchange move attempts (see simulation details above) and found that increasing the fraction of state-exchange move attempts has an insignificant impact on the observed dynamics. This indicates that the association/dissociation of the clusters is mainly

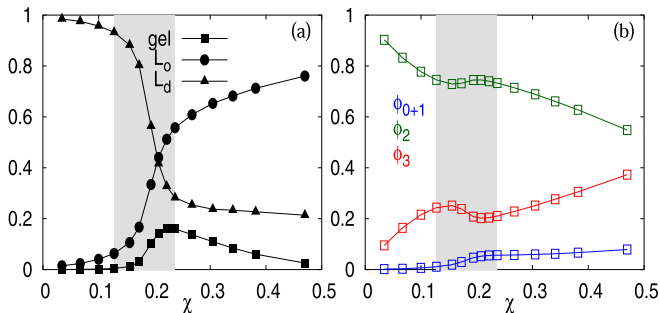


FIG. 3. (a) The fractions of sites belonging to the L_d , L_o , and gel regions. (b) The composition of sites in the L_o state: ϕ_{0+1} is the fraction of sites that are occupied by voids and disordered chains, ϕ_2 by ordered chains, and ϕ_3 by Chol. The gray-shaded area marks the $L_d + L_o$ coexistence regime. Both figures are plotted as function of χ at $T = 316.5$ K.

governed by the lateral diffusion of the lipids rather than by the change in their states.

Figures 1(h1) and 1(h2) provide a magnified view of the regions marked by squares in Figs. 1(e) and 1(d), respectively. These regions contain about 500 lipids which are plotted with the same color coding as in the larger snapshots. Each point is also marked by a colored border, indicating whether the site is part of the L_d region (purple), L_o region (yellow), or a gel-like cluster of hexagonally packed ordered chains (black) [labeled as “hexag.” in Fig. 1(h2)]. The algorithm with which the different regions are identified is described in the Supplemental Material [38]. Figure 1(h3) presents a snapshot of similar size from an atomistic simulation study of DPPC/Chol mixtures [30]. [The labels “ L_d ,” “ L_o ,” and “hexag.” appear in the original copy and were adopted by us in Fig. 1(h2).] The similarity between the results of the atomistic [Fig. 1(h3)] and lattice simulations [Figs. 1(h1) and 1(h2)] is striking. In both, we observe Chol-free gel-like nanodomains surrounded by regions with a high density of Chol and ordered chains. The composition of the system, i.e., fraction of sites belonging to each of the three regions (averaged over time and over the entire lattice), is plotted in Fig. 3(a) as a function of χ at $T = 316.5$ K. The data show that the addition of Chol leads to a monotonic increase (decrease) in the population of the L_o (L_d) states, with the sharpest incline (decline) occurring in the $L_d + L_o$ coexistence regime (marked by a gray-shaded area). The fraction of sites in the gel-like clusters exhibits a curious nonmonotonic behavior: It increases from zero as the system enters the $L_d + L_o$ regime and then drops back to zero as χ continues to grow.

To conclude, our findings on the inhomogeneity of the L_o domains are consistent with previous experimental [29] and atomistic simulations [30] studies. They suggest that the gel-like regions should be treated separately and not be counted as part of the L_o state. The composition of the latter is plotted in Fig. 3(b). It contains ordered chains (ϕ_2) and Chol (ϕ_3), with a small amount of voids and disordered chains (ϕ_{0+1}).

Discussion and summary. The formation of L_o domains has been associated with three general mechanisms [27]: (i) curvature-composition coupling, (ii) microemulsion

stabilization by lineactant hybrid lipids, and (iii) near-critical fluctuations. None of these mechanisms seems to be relevant to the system under investigation. The model involves no curvature energy term (first mechanism), and shows no evidence for the substantial presence of lipids with ordered and disordered chains along the interfaces between L_d and L_o regions (second mechanism). With only the first two terms in Eq. (1), the system Hamiltonian can be mapped onto the Ising model. However, we find no signs of criticality (third mechanism) near the edge of the $L_d + L_o$ coexistence regime [point (f) in Fig. 1], suggesting that with the addition of Chol [third term in Eq. (1)] and the elastic energy term (fourth term), the model no longer belongs to the Ising universality class.

Our results call for a different thermodynamic explanation of the formation of the L_o domains and their internal inhomogeneous structure. Adding Chol molecules to the membrane in the L_d phase ($T > T_m$) causes an increasing number of chains in their vicinity to flip from a disordered to an ordered state, with which Chol interacts more favorably. However, the attraction between the Chol and the ordered chain is weaker than the interaction between the ordered chains with each other ($\epsilon_{23} < \epsilon_{22}$), and provides only partial compensation for the loss of chain configurational entropy. Therefore, as the concentration of Chol and ordered chains somewhat grows, the latter partially segregate and form the gel-like clusters. The distribution of lipids and Chol in Figs. 1(h1)–1(h3) may be interpreted as a coexistence of regions in the gel and L_d phases which, close to the first-order melting temperature [$(T - T_m)/T_m \lesssim 0.02$], are nearly equivalent thermodynamically. Chol is excluded from the gel and little dissolves in the L_d region. It accumulates at high concentration along the gel- L_d interfaces and induces ordering of the lipid chains, creating a L_o “buffer” region. This may be regarded as if the Chol molecules serve as lineactants between the ordered and disordered lipid chains. The composition of the L_o state does not change much in the coexistence region of the phase diagram [see Fig. 3(b)], suggesting that it may be regarded as a metastable phase. Indeed, a single chain exchange from an ordered to a disordered state (while keeping unchanged the states of the others) results in an increase in the system free energy for most of the chains in the L_o phase (see data in the Supplemental Material [38]). This explains the prolonged lifetime of the domains. At higher values of χ , Chol “invades” the gel clusters and eliminates them [Fig. 3(a)], and the L_o domains merge into a single L_o phase.

To summarize, our model provides a dynamical picture of DPPC/Chol mixtures over a wide range of length scales and length scales. Its minimal nature helps us identifying the disparity between the packing interactions of ordered chains with Chol and with each other, as the reason for their nonideal mixing within the L_o nanodomains. At larger spatial scales, there is no macroscopic L_d/L_o phase separation. The system arranges itself such that the Chol-rich L_o regions separate the gel and Chol-poor L_d regions. The basic thermodynamic mechanism proposed here may also apply to ternary model mixtures of saturated and unsaturated lipids with Chol (where, indeed, similar heterogeneous domains have also been recently identified [24]) and may be relevant to raft domains in biological membranes.

Acknowledgments. This work was supported by the Israel Science Foundation (ISF), Grant No. 991/17. T.S. thanks the

Planning and Budgeting Committee of the Council for Higher Education of Israel for supporting his postdoctoral fellowship.

-
- [1] B. Alberts, A. Johnson, J. Lewis, M. Raff, K. Roberts, and P. Walter, *Molecular Biology of the Cell*, 4th ed. (Garland Science, New York, 2002).
- [2] K. Simons and E. Ikonen, Functional rafts in cell membranes, *Nature (London)* **387**, 569 (1997).
- [3] L. Pike, Rafts defined: A report on the keystone symposium on lipid rafts and cell function, *J. Lipid Res.* **47**, 1597 (2006).
- [4] I. Levental, K. R. Levental, and F. A. Heberle, Lipid rafts: Controversies resolved, mysteries remain, *Trends Cell Biol.* **30**, 341 (2020).
- [5] K. Simons and D. Toomre, Lipid rafts and signal transduction, *Nat. Rev. Mol. Cell Biol.* **1**, 31 (2000).
- [6] B. Leitinger and N. Hogg, The involvement of lipid rafts in the regulation of integrin function, *J. Cell Sci.* **115**, 963 (2002).
- [7] T. Murai, The role of lipid rafts in cancer cell adhesion and migration, *Int. J. Cell Biol.* **2012**, 763283 (2012).
- [8] E. Ikonen, Roles of lipid rafts in membrane transport, *Curr. Opin. Cell Biol.* **13**, 470 (2001).
- [9] M. F. Hanzal-Bayer and J. F. Hancock, Lipid rafts and membrane traffic, *FEBS Lett.* **581**, 2098 (2007).
- [10] F. G. van der Goot and T. Harder, Raft membrane domains: From a liquid-ordered membrane phase to a site of pathogen attack, *Semin. Immunol.* **13**, 89 (2001).
- [11] H.-J. Kaiser, D. Lingwood, I. Levental, J. L. Sampaio, L. Kalvodova, L. Rajendran, and K. Simons, Order of lipid phases in model and plasma membranes, *Proc. Natl. Acad. Sci. USA* **106**, 16645 (2009).
- [12] A. Filippov, G. Orädd, and G. Lindblom, Lipid lateral diffusion in ordered and disordered phases in raft mixtures, *Biophys. J.* **86**, 891 (2004).
- [13] M. M. B. Holl, Cell plasma membranes and phase transitions, in *Phase Transitions in Cell Biology*, edited by G. H. Pollack and W. C. Chin (Springer, Dordrecht, 2008).
- [14] S. Komura, H. Shirotori, P. D. Olmsted, and D. Andelman, Lateral phase separation in mixtures of lipids and cholesterol, *Europhys. Lett.* **67**, 321 (2004).
- [15] G. W. Feigenson, Phase boundaries and biological membranes, *Annu. Rev. Biophys. Biomol. Struct.* **36**, 63 (2007).
- [16] S. L. Veatch, O. Soubias, S. L. Keller, and K. Gawrisch, Critical fluctuations in domain-forming lipid mixtures, *Proc. Natl. Acad. Sci. USA* **104**, 17650 (2007).
- [17] F. M. Goñi, A. Alonso, L. A. Bagatolli, R. E. Brown, D. Marsh, M. Prieto, and J. L. Thewalt, Phase diagrams of lipid mixtures relevant to the study of membrane rafts, *Biochim. Biophys. Acta, Mol. Cell Biol. Lipids* **1781**, 665 (2008).
- [18] G. G. Putzel and M. Schick, Phenomenological model and phase behavior of saturated and unsaturated lipids and cholesterol, *Biophys. J.* **95**, 4756 (2008).
- [19] P. L.-G. Chong, W. Zhu, and B. Venegas, On the lateral structure of model membranes containing cholesterol, *Biochim. Biophys. Acta, Biomembr.* **1788**, 2 (2009).
- [20] G. W. Feigenson, Phase diagrams and lipid domains in multicomponent lipid bilayer mixtures, *Biochim. Biophys. Acta, Biomembr.* **1788**, 47 (2009).
- [21] M. Schick, Membrane heterogeneity: Manifestation of a curvature-induced microemulsion, *Phys. Rev. E* **85**, 031902 (2012).
- [22] S. Komura and D. Andelman, Physical aspects of heterogeneities in multi-component lipid membranes, *Adv. Colloid Interface Sci.* **208**, 34 (2014).
- [23] S. Sadeghi, M. Müller, and R. L. C. Vink, Raft formation in lipid bilayers coupled to curvature, *Biophys. J.* **107**, 1591 (2014).
- [24] A. J. Sodt, M. L. Sandar, K. Gawrisch, R. W. Pastor, and E. Lyman, The molecular structure of the liquid-ordered phase of lipid bilayers, *J. Am. Chem. Soc.* **136**, 725 (2014).
- [25] J. H. Ipsen, G. Karlström, O. G. Mouritsen, H. Wennerström, and M. J. Zuckermann, Phase equilibria in the phosphatidylcholine-cholesterol system, *Biochim. Biophys. Acta, Biomembr.* **905**, 162 (1987).
- [26] M. R. Vist and J. H. Davis, Phase equilibria of cholesterol/dipalmitoylphosphatidylcholine mixtures: Deuterium nuclear magnetic resonance and differential scanning calorimetry, *Biochemistry* **29**, 451 (1990).
- [27] F. Schmid, Physical mechanisms of micro- and nanodomain formation in multicomponent lipid membranes, *Biochim. Biophys. Acta, Biomembr.* **1859**, 509 (2017).
- [28] M. C. Rheinstädter and O. G. Mouritsen, Small-scale structure in fluid cholesterol-lipid bilayers, *Curr. Opin. Colloid Interface Sci.* **18**, 440 (2013).
- [29] C. L. Armstrong, D. Marquardt, H. Dies, N. Kučerka, Z. Yamani, T. A. Harroun, J. Katsaras, A.-C. Shi, and M. C. Rheinstädter, The observation of highly ordered domains in membranes with cholesterol, *PLoS One* **8**, e66162 (2013).
- [30] M. Javanainen, H. Martinez-Seara, and I. Vattulainen, Nanoscale membrane domain formation driven by cholesterol, *Sci. Rep.* **7**, 1143 (2017).
- [31] A. Caillé, D. Pink, F. De Verteuil, and M. J. Zuckermann, Theoretical models for quasi-two-dimensional mesomorphic monolayers and membrane bilayers, *Can. J. Phys.* **58**, 581 (1980).
- [32] P. F. Almeida, A simple thermodynamic model of the liquid-ordered state and the interactions between phospholipids and cholesterol, *Biophys. J.* **100**, 420 (2011).
- [33] H. H. Klump, B. P. Gaber, W. L. Peticolas, and P. Yager, Thermodynamic properties of mixtures of deuterated and undeuterated dipalmitoyl phosphatidylcholines (differential scanning calorimetry/lipid bilayers/membranes), *Thermochim. Acta* **48**, 361 (1981).
- [34] A. M. Smondyrev and M. L. Berkowitz, Structure of dipalmitoylphosphatidylcholine/cholesterol bilayer at low and high cholesterol concentrations: Molecular dynamics simulation, *Biophys. J.* **77**, 2075 (1999).
- [35] S. Doniach, Thermodynamic fluctuations in phospholipid bilayers, *J. Chem. Phys.* **68**, 4912 (1978).

- [36] P. F. F. Almeida, Thermodynamics of lipid interactions in complex bilayers, *Biochim. Biophys. Acta Biomembr.* **1788**, 72 (2009).
- [37] P. F. F. Almeida, How to determine lipid interactions in membranes from experiment through the Ising model, *Langmuir* **35**, 21 (2018).
- [38] See Supplemental Material at <http://link.aps.org/supplemental/10.1103/PhysRevResearch.3.L042030> for more details about the lattice site classification algorithm, the stability analysis of the ordered lipid chains in the liquid-ordered region, and a simulation movie showing the dynamics of the liquid-ordered domains.