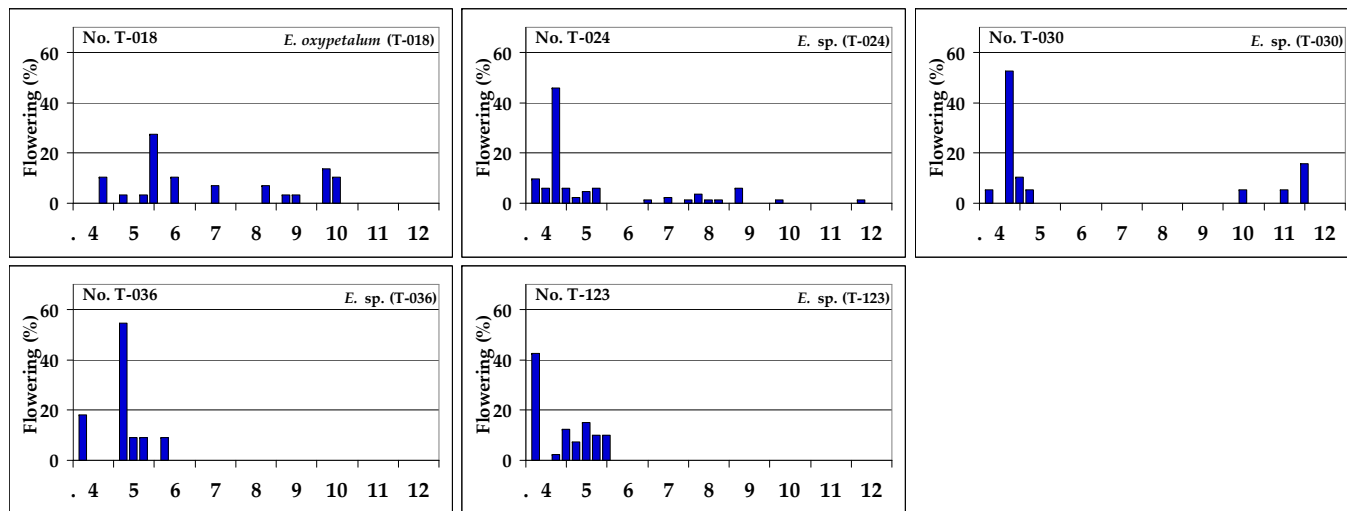


Table

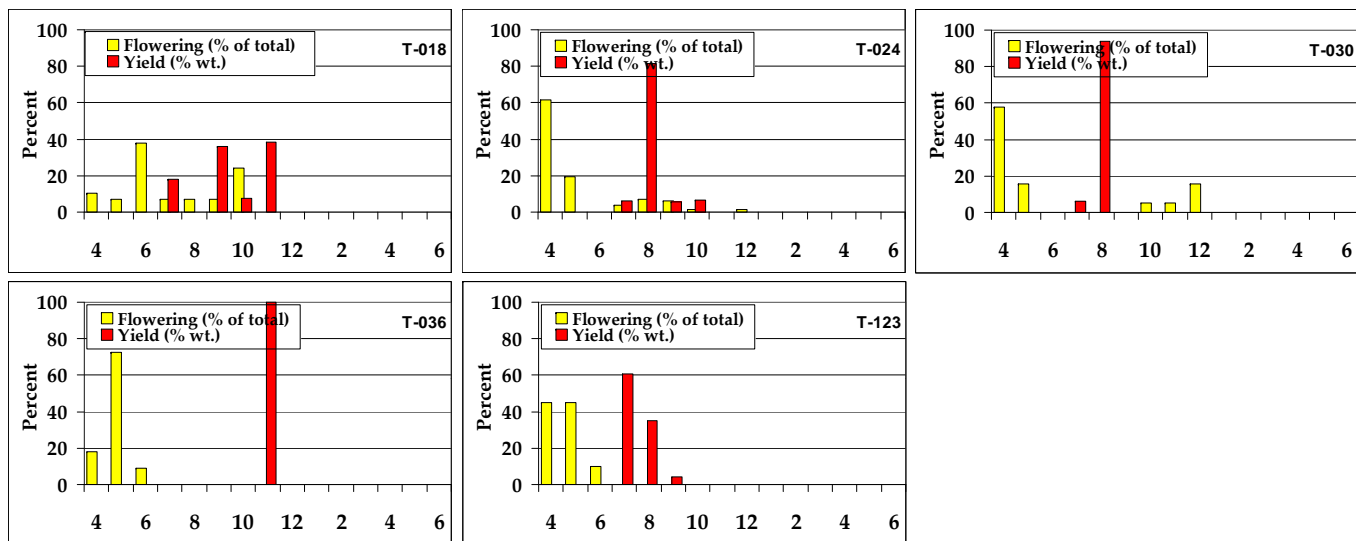
<i>Epiphyllum species</i>													
No.	Code	Species	Shoot ribes	Flower	Pollen	Selfed (% set)	Flowers	Fruit	Days	Pulp (%)	Seeds	Taste (0-5)	Note
				size (cm)	quantity (0-5)		per plant	wt. (g)	to ripening		per fruit		
T-018	David -3	<i>Epiphyllum oxypetalum</i>	2	34.0	2.0	0	8.7	35	37	50	0	2.0	
T-024	Alex-1	<i>Epiphyllum sp.</i>	2	15.7	2.5	0	6.8	36	115	76	857	4.4	Aromatic taste
T-030	71-08-17	<i>Epiphyllum sp.</i>	2	14.0	2.5	0	6.3	20	115	64	686	4.6	Aromatic taste
T-036	96-684	<i>Epiphyllum sp.</i>	2-3	14.5	2.0	0	3.7	50	108	74	1005	4.5	Aromatic taste
T-123	Eilam-7	<i>Epiphyllum sp.</i>	2	12.0	3.0	0	13.3	16	108	59	564	4.2	Aromatic taste

Fig.

Weekly flowering



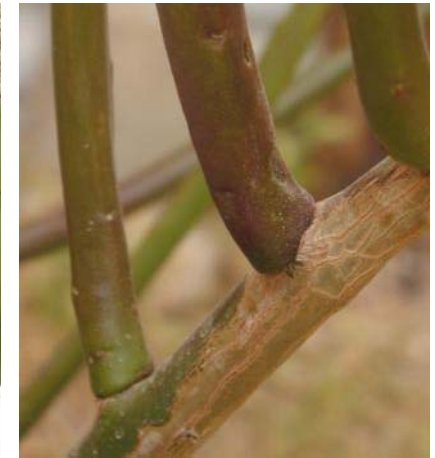
Monthly flowering & ripening



T-018

# David (T-018)

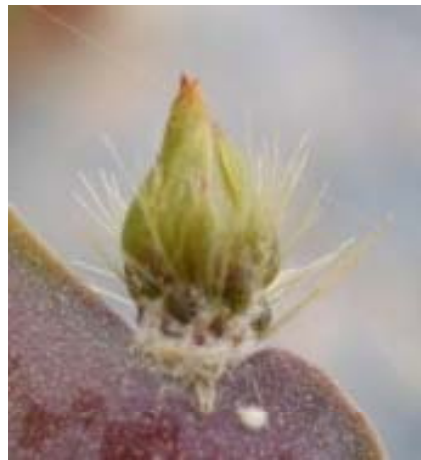
*Epiphyllum oxypetalum*



T-024

# Alex (T-024)

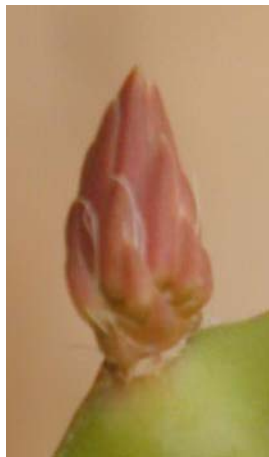
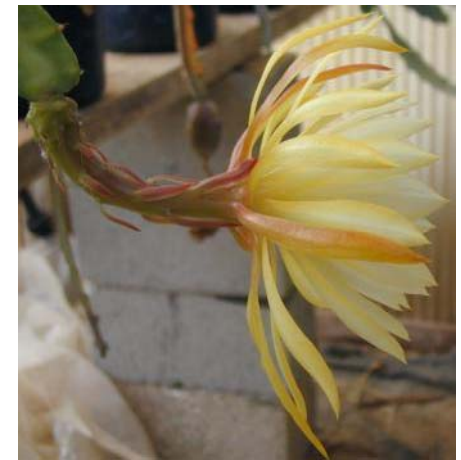
*Epiphyllum* sp.



T-030

71-08-17 (T-030)

*Epiphyllum* sp.  
(*E. crenatum*)



T-036

**96-684 (T-036)**  
*Epiphyllum* sp.



T-123

# Eilam (T-123)

*Epiphyllum ackermannii*

